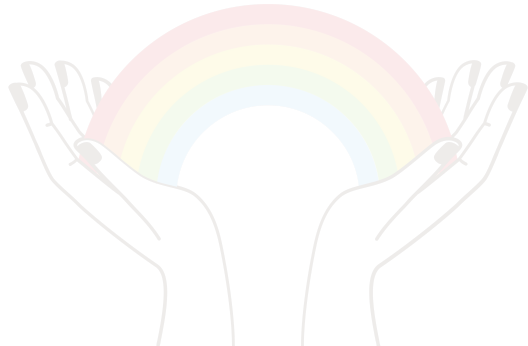


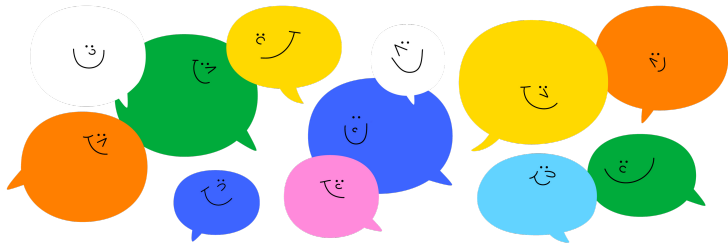
The Safe Pledge

What does it mean to be a Safe person?



UK Auxiliary
Services





Let's Think

When's the first time you can remember learning that some people are lesbian, gay, bisexual, or queer?

Where did most of the influence/understanding of the LGBTQ community come from?



What does it mean to be a safe person?

I commit to providing a safe support network for the LGBTQ* community by:

Respect someone's gender identity.

Respect individuals' privacy.

Recognizing the importance of the language I use.

Using the name and pronouns of those I encounter.

Encouraging others to be allies.

Why wearing your badge is important

Your badge is a beacon of safety for those you encounter each day. Wearing your Safe Badge shows others that you are an *Ally, Advocate, Leader & Supporter*.

Badge Pickup Locations

Gatton Student Center

Student Administration Office | 1st Floor
LGBTQ Resource Center | 2nd Floor



What resources are available?

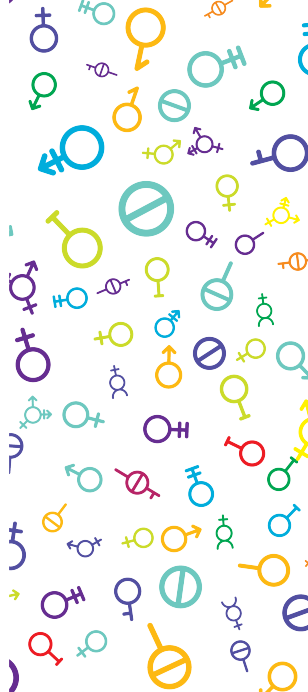
Education

The LGBTQ resource center office strives to educate students, faculty, staff, and community members about various topics related to gender and sexuality. One of our primary forms of education is **SafeZone**. This is a 90-minute workshop to better equip individuals to be allies to the LGBTQ* community.

In addition to SafeZone, the office supervises small-scale educational programming run by student ambassadors and interns.

Advocacy

Advocating for the LGBTQ* community is essential for voices to be heard and accepted. This includes identity-related housing accommodations, a single-stall lockable bathroom registry, name and gender marker change form, identity confirming Wildcat ID cards, and a partnership with Transform Health Clinic.



Contact Information

LGBTQ Resource Center | Gatton Student Center
LGBTQ@uky.edu

Emily Conley | Auxiliary Services
ekco240@uky.edu

